



# **EVENTS & VENUES**

**ROTORUA | NEW ZEALAND**

## **ROTORUA**

**Energy Events Centre  
Convention Centre  
Civic Theatre  
International Stadium  
Soundshell  
Te Runanga Tea House**





## Events & Venues Rotorua

KIA ORA – WELCOME TO THE CENTRE OF THE NORTH ISLAND



Managing six spectacular venues and more than 100 major outdoor events annually, Events & Venues caters for premier conferences, exhibitions, gala dinners, meetings, sports, entertainment, weddings and any other event you can imagine.

We have a venue for every occasion; from the impressive, state-of-the-art Energy Events Centre, Rotorua Convention Centre and Rotorua International Stadium through to the historic Te Runanga Tea House, Rotorua Soundshell and Civic Theatre.

Our experienced team specialises in every aspect of venue and event management and can provide you with an array of event ideas and options to create exceptional - and personalised occasions.

To ensure every event is a complete success, Events & Venues also work closely with accommodation providers, caterers, technicians, local theming companies and activity operators.

He aha te mea nui o te Ao? He tangata, he tangata, he tangata.

What is the greatest thing in the world? It is people, it is people, it is people.







## ENERGY EVENTS CENTRE

Rotorua's Energy Events Centre is a versatile, multi-purpose complex positioned on the steamy edge of Lake Rotorua. With its stunningly unique location in the picturesque Government Gardens, the Centre provides extensive car parking and is also within easy walking distance of the retail precinct, accommodation, restaurants, cafes and spa facilities.

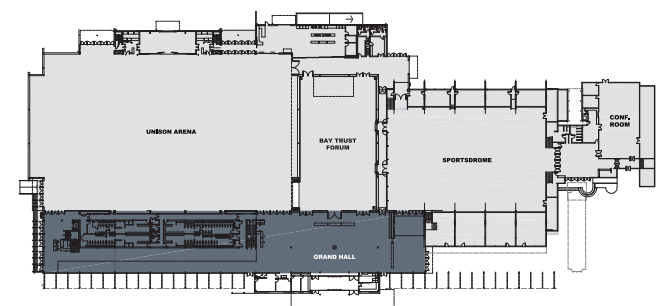
The Energy Events Centre is a four star plus Qualmark venue incorporating 10 separate spaces ideal for conferences, exhibitions, banquets, concerts and sporting events.

## Wai Ora Spa Grand Hall

The Wai Ora Spa Grand Hall has been described as a "marriage between traditional Maori carving and contemporary indigenous art."

Visitors to the Energy Events Centre enter via the Wai Ora Spa Grand Hall and are immediately captivated by the stunning contrast of contemporary architecture and traditional Maori design elements.

The bold colours, huge carved doors, and the illuminated stylised contemporary 'pou' (or pole) acknowledging the strength of the city's Maori affiliations, all catch the eye.







## ENERGY EVENTS CENTRE

### BayTrust Forum

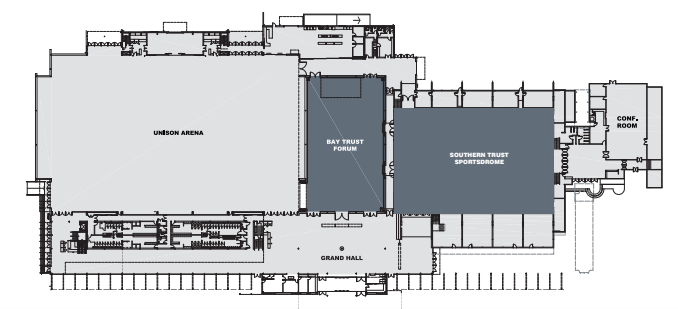
From the Wai Ora Spa Grand Hall, step straight into the BayTrust Forum. With more than 930 square metres of space and a capacity of up to 850 people theatre-style, this stunning room truly has a point of difference.

The red wall patterns reflect the surrounding Rotorua lakes and can be backlit for increased impact.

With its unique design, high ceilings, and spacious feel, this embracing space is ideal for exhibitions, plenary sessions, workshops and banquet dinners.

### Southern Trust Sportsdrome

The original Sportsdrome building on this site remains a key space for local and national sporting events. Prior to the opening of the Energy Events Centre, the Sportsdrome (with more than 1450 square metres of space) was Rotorua's largest convention banqueting area, and it continues to provide a versatile backdrop for corporate exhibitions and themed award evenings.







## ENERGY EVENTS CENTRE

### Unison Arena

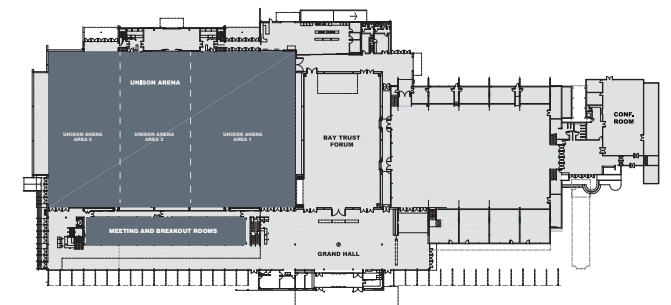
A multi-functional area with more than 3500 square metres of single level, pillar-free, specialist tradeshow and exhibition space, the Unison Arena can accommodate 4000 delegates' theatre-style or 2600 at a seated banquet. Able to be easily organised into three separate areas (the largest in excess of 1500 square metres), means the Arena offers total versatility to meet client needs. Draping options in a variety of configurations mean even more choice.

Acoustically designed to maximise sound distribution, the Arena is not only ideal for exhibitions, conferences and gala dinners, it is also highly suitable as a sporting, concert or performance venue.

Offering yet another option as a breakout or meeting room space, the South Mezzanine is also the ideal venue for corporate/ sponsor functions when the Arena plays host to major indoor sporting events.

### Meeting & Breakout Rooms

Five breakout and meeting rooms are also available on the mezzanine floor overlooking the Unison Arena. With a capacity to host up to 110 delegates and lots of natural light, each room is suited to a variety of uses.







## ENERGY EVENTS CENTRE

### Catering

The stunning cuisine from the Energy Events Centre's in-house catering team constantly surpasses expectations; with dish after dish of imaginative seasonal cuisine freshly prepared on the premises from locally-sourced ingredients.

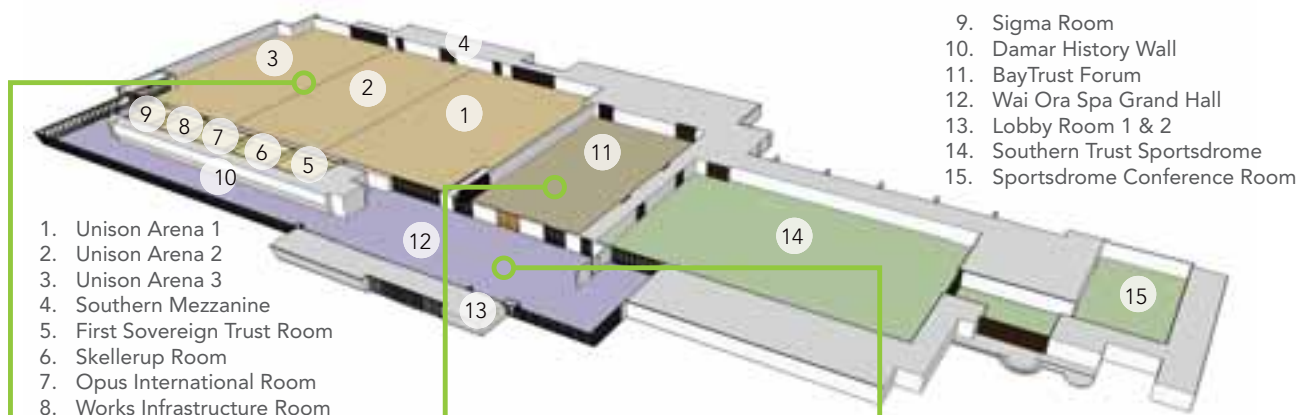
Our passionate and talented team offers imaginative twists on traditional food as well as maintaining a healthy balance to meals that will help sustain the energy levels of your delegates. Following discussions about your requirements, we provide tastings of sample menus as well as offering serving suggestions.

Past out-catering events have ranged from intimate dinners for two through to functions for 2,000 plus.

We are also happy to work with you to help create a memorable experience at one of Rotorua's stunning off-site locations.







1. Unison Arena 1
2. Unison Arena 2
3. Unison Arena 3
4. Southern Mezzanine
5. First Sovereign Trust Room
6. Skellerup Room
7. Opus International Room
8. Works Infrastructure Room

9. Sigma Room
10. Damar History Wall
11. BayTrust Forum
12. Wai Ora Spa Grand Hall
13. Lobby Room 1 & 2
14. Southern Trust Sportsdrome
15. Sportsdrome Conference Room



## Energy Events Centre

### FACTS AND FIGURES

Venue	Floor Space (sq m)	Theatre	Classroom	Cocktail	Banquet	Exhibition	Ceiling Height (m)	Length (m)	Width (m)
BayTrust Forum	934	850	600	2100	700	60	11	39	22
BayTrust Forum (Stage & Dance floor)	934	-	-	-	550	-	11	39	22
Unison Arena (1, 2, 3)	3567	4000	2490	5650	2600	279	12 - 16	70	45
Unison Arena 1	1531	1680	930	2420	840	107	12 - 16	30	45
Unison Arena 2	1018	1080	640	1615	600	78	12 - 16	20	45
Unison Arena 3	1018	1080	640	1615	600	82	12 - 16	20	45
Southern Mezzanine	153	140	80	160	80	-	3.5	24	7
Wai Ora Spa Grand Hall	1480	-	-	2130	-	50	6 - 10	111	24
Southern Trust Sportsdrome	1453	1210	1160	1800	700	110	5 - 9	46	31
BREAKOUT ROOMS									
First Sovereign Trust Room	99	70	40	100	-	-	3.5 - 6.5	7	12
Skellerup Room	120	110	60	80	-	-	3.5 - 6.5	10	12
Opus International Room	120	110	60	80	-	-	3.5 - 6.5	10	12
Works Infrastructure Room	120	110	60	80	-	-	3.5 - 6.5	10	12
Sigma Room	120	110	60	80	-	-	3.5 - 6.5	10	12
Sportsdrome - Conference Room	230	240	150	-	-	-	4.2 - 4.9	30	12
Skellerup & Opus Rooms	246	220	160	160	-	-	3.5 - 6.5	20	12
Works and Sigma Rooms	246	220	160	160	-	-	3.5 - 6.5	20	12





## Rotorua Convention Centre

An architecturally stunning building, the Rotorua Convention Centre successfully blends the original Stripped Classical and Spanish Mission design with contemporary elements to create a versatile and elegant venue.

Located in the midst of Rotorua's downtown business and retail area, the Qualmark four star Rotorua Convention Centre is a leisurely stroll from major hotels, shops, bars, restaurants and the Lakefront.

Designed specifically for conferences, exhibitions and entertainment, the Rotorua Convention Centre has all the flexibility you need to stage your next event in style.







## Rotorua Civic Theatre

Opened in 1940, the Civic Theatre building originally housed a library, museum and municipal offices. In the ensuing years the building was also used as a theatre, concert chamber and supper room. In 1995 the theatre was fully renovated and upgraded to become a modern, fully-equipped live performance theatre. Another major re-development, including a complete stagehouse construction, was completed in September 2010.

The Civic Theatre now has state-of-the-art facilities including a 23 metre high stagehouse, an enhanced flying system, a deep stage with wider wings, and 11 new split-level changing rooms in addition to many technical enhancements.

Located in the Convention Centre, the Rotorua Civic Theatre has comfortable, contemporary tiered seating for 686 people providing a superb environment for opening ceremonies plus plenary and business sessions. The deep stage and wide wings also make it a wonderful area for stagehouse dinners.

The venue is fully equipped with every audio visual requirement. A qualified full-time tech team is also available to assist with set-up and technical advice ensuring your event is a success.

Pre-show and intermission refreshments as well as merchandising booths can be provided in the foyer areas of the wider Convention Centre. A ticketing box office is also conveniently located within the Centre.

### FACTS AND FIGURES

Venue	Theatre
<b>Civic Theatre</b>	686
<b>Civic Theatre (Stall Seats - Foyer level)</b>	458
<b>Civic Theatre (Circle Seats - Mezzanine level)</b>	228







## ROTORUA CONVENTION CENTRE



### Banquet Room

Exhibitions and awards dinners are a perfect fit for the Banquet Room. Its convex floor-to-ceiling glass windows encircle a 728 square metre space that can hold up to 50 trade exhibition booths or up to 700 guests at a banquet dinner. Ease of access and loads of natural light also make the Banquet Room a favoured venue for seminars and product launches as well as community-orientated use as a fair, festival and exhibition space.

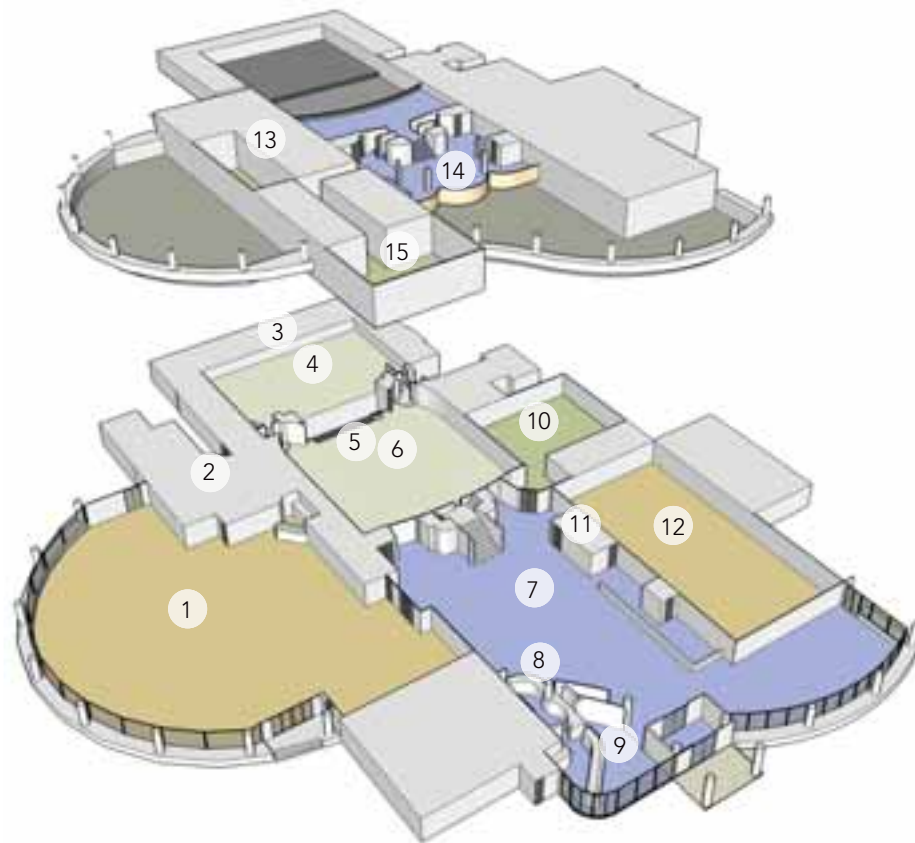
### Meeting & Breakout Rooms

The 350-seat acoustic Concert Chamber is not only ideal for orchestral concerts, but is also ideal for smaller business sessions, product launches and formal banquets. Four additional meeting and breakout rooms add even more versatility to the Rotorua Convention Centre.





1. Banquet room
2. Kitchen
3. Dressing Rooms
4. Stage
5. Orchestra Pit
6. Theatre
7. Foyer
8. Conference Reception
9. Ticketing
10. South Room
11. Lift
12. Concert Chamber
13. East Rooms 1&2
14. Mezzanine
15. West Room



## Rotorua Convention Centre

### FACTS AND FIGURES

Venue	Floor Space (sq m)	Theatre	Classroom	Cocktail	Banquet	Exhibition	Ceiling Height (m)	Length (m)	Width (m)
Civic Theatre		686	-	-	-	-			
Banquet Room	728	800	400	1000	700	50	7.6	32	20
Banquet Room (Stage & Dance floor)	728	-	-	-	400	-	7.6	32	20
Concert	278	350	160	400	200	20	5.6	24	12
Foyer	483	-	-	650	200	30			
Mezzanine		50	-	100	-	-			
BREAKOUT ROOMS									
West Room	84	100	48	120	80	-	5.5	12	7
East Room 1	43	40	26	60	50	-	2.5	7	6
East Room 2	43	40	26	60	50	-	2.5	7	6
South Room	75	70	48	100	60	-	4	10	8





## Te Runanga Tea House

The historic Te Runanga Tea House, one of Rotorua's most nostalgic venues, is located in the heart of the magical Government Gardens, adjacent to Rotorua city centre. Built as a tea pavilion in 1903, Te Runanga (The Meeting House) served as a social centre for spa facilities where visitors could relax early last century.

Its location, mid-way between the Rotorua Convention Centre and the Energy Events Centre, makes it great for an extra breakout room. Combined with its charm and character, the position of the Tea House means the venue attracts many smaller conference and incentive groups seeking something extra special.

Te Runanga is the perfect spot for incentive and executive dinners. The heritage-protected building's wide three-sided veranda overlooking the Government

Gardens provides the ideal setting for pre-dinner cocktails, and it's also a favourite option for retreats, cocktail events and weddings.

### FACTS AND FIGURES

Venue	Theatre	Classroom	Cocktail	Banquet
Reception	50	30	70	40







# Rotorua International Stadium

A seven-minute drive from the heart of downtown Rotorua and just five minutes from the hub of Rotorua’s accommodation facilities, the iconic Rotorua International Stadium offers extensive car parking and can cater for all types of sporting, concert and festival events.

With a capacity to hold up to 40,000 supporters, the stadium is traditionally the domain of local and international sporting events and festivals. The Raggamuffin reggae festival, UB40 and the Searchlight Military Tattoo are among the shows that have been successfully staged at the stadium in front of 40,000 fans.

The stadium’s main field has television broadcast-quality floodlights to accommodate night events whilst its sister ground, Field 2, has training lights and a full-size grass athletics track.

The grandstand’s top level includes two lounges and two corporate boxes whilst the media tower opposite has four separate rooms for media activities. The tower roof balcony provides a prime camera location.

An 8m x 2m LED scoreboard overlooks the main field and, apart from traditional score updates, is great for advertising as well as sponsors and promotional messages during events.

## FACTS AND FIGURES

Venue	Capacity	Classroom	Cocktail	Banquet	Concert
Grandstand Seats	5300	-	-	-	-
Terrace Seating	6000	-	-	-	-
Total Ground Seating	40000	-	-	-	40000
Members Lounge	170	100	200	100	-
Panasonic Lounge	200	100	250	130	-
Lions Den	160	100	250	150	-







## Major & Community Events

In addition to venue management, the Events & Venues team works with professional event organisers to host a variety of outdoor events in our parks, lakes, forests and roads. Currently we maintain a calendar of regular events, including national marathons, top triathlons and mountain bike competitions.

Our events team also works on attracting international and national events which make the most of our vast array of natural resources. Working with national and international sporting federations, we have succeeded in bringing many significant major events to Rotorua such as the world mountain bike championships, world water-ski racing championships and Xterra off-road event.

Once events are secured, we continue to work with event organisers to ensure each event is a complete success. It is this management expertise, coupled with our great event infrastructure, which allows us to 'punch above our weight'.

The Events & Venues team also supports community organisers to bring the vision for their event to fruition.

These events allow the community to come together to celebrate Rotorua and its people. We assist by providing the management experience and avenues for local promotion that help make the most of the event. We aim to provide a one-stop shop within the Rotorua District Council, smoothing the way to a successful event by providing regulatory information through to one-on-one consultations.







SKYLINE ROTORUA

## Rotorua – New Zealand

New Zealand is undoubtedly one of the most beautiful countries in the world. Filled with action and adventure, a stunning natural environment, history, art and culture, it's a country with everything to offer.

Located in the central North Island, the Rotorua district has a multi-cultural population of approximately 77,000 people.

Rotorua is a city of spirit and adventure; an iconic international visitor destination renowned for its Maori culture and geothermal activity. Only a short drive from magnificent mountains, a host of lakes and the Pacific Ocean coastline, Rotorua offers a vast array of activities and a comprehensive range of accommodation types.

Downtown there are over 250 shops, and a selection of more than 50 restaurants to choose from. The majority of the city's more than 13,000 accommodation beds are within walking distance of our leading venues.

Our premier tourism destination is well connected to the rest of New Zealand and the world through a network of air and road links. It is a leisurely two and a half hour drive or 40-minute flight from Auckland. The Rotorua International Airport, a mere 15-minute drive from the city centre, offers air services from Australia and around New Zealand.

Rotorua is a city filled with adventure and excitement, and there is something to suit everyone.



WAIORA SPA HELLS GATE



ROTORUA MUSEUM



RACELINE KARTING - OFF ROAD NZ







Rotorua District Lakes



Te Runanga Tea House



Rotorua Lakefront/Village Green



Rotorua Soundshell



International Hotels



Whakarewarewa Forest



Rotorua International Airport



Energy Events Centre



Rotorua Convention Centre



City Focus



Geothermal Area



Rotorua International Stadium





GOVERNMENT GARDENS



POLYNESIAN SPA



SHWEEB - AGROVENTURES



ENERGY EVENTS CENTRE



TE PUIA



ROTORUA CONVENTION CENTRE

## TWO CONVENTION CENTRES - ONE ICONIC DESTINATION

Contact Details: Events & Venues - Rotorua, New Zealand.

Telephone: +64 7 349 5141

Fax: +64 7 349 5142

Email: [eventsandvenues@rdc.govt.nz](mailto:eventsandvenues@rdc.govt.nz)

Web: [www.eventsandvenues.co.nz](http://www.eventsandvenues.co.nz)

Address: 1170 Fenton Street, Private Bag 3029  
Rotorua Mail Centre Rotorua 3046 New Zealand

EVENT DÉCOR IMAGES COURTESY OF EVENT IMPRESSIONS

**EVENTS  
& VENUES**  
ROTORUA | NEW ZEALAND