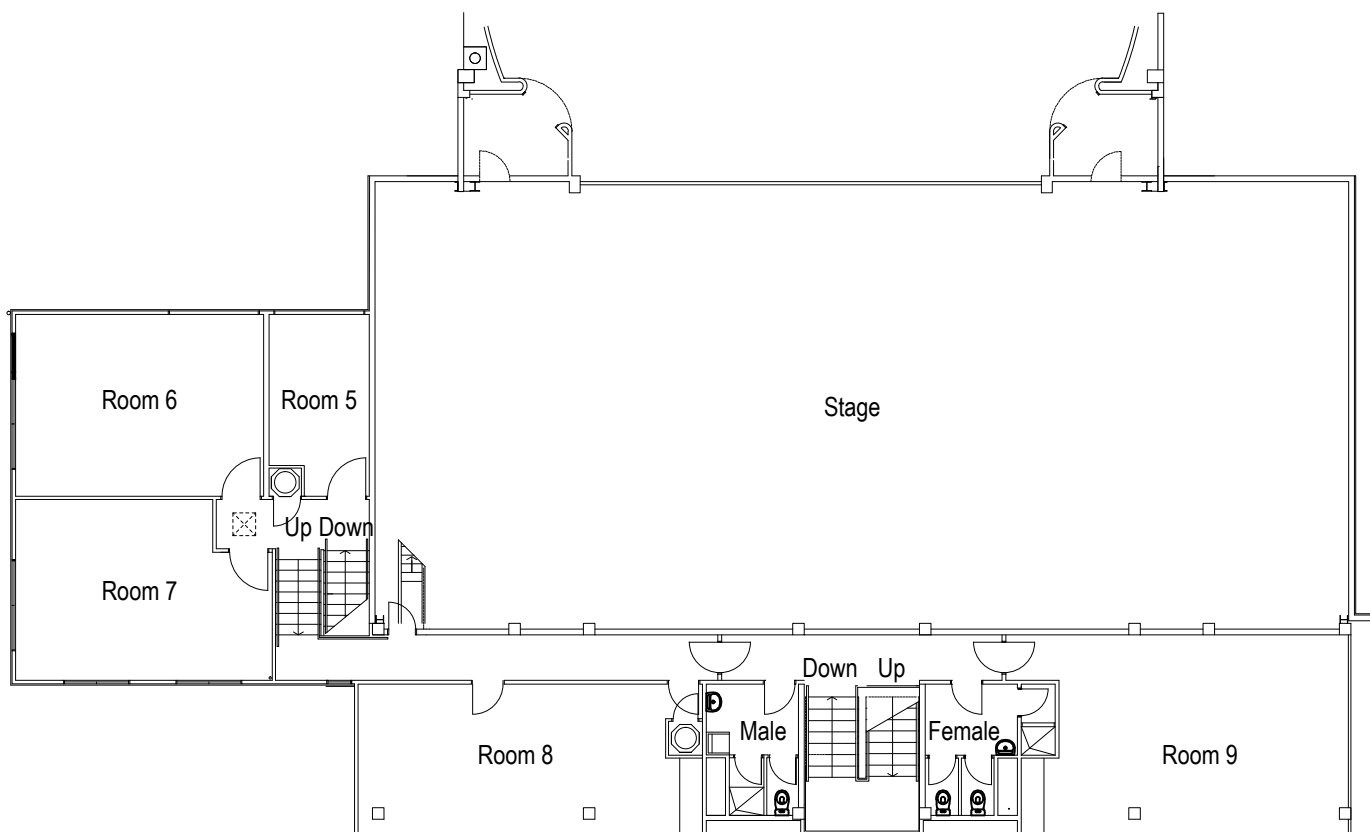


# Rotorua Civic Theatre

## Stage Rooms Level 2



### Room 5

Floor Area 2.65m x 4.00m  
 Wardrobe Make up 2.40m Hanging Rail  
 2 x Wash Basins  
 3.60m Bench  
 Overhead lights  
 4 x Mirrors  
 8 Chairs

### Room 6

Floor Area 5.25m x 8.62m  
 Wardrobe Make up 4.80m Hanging Rail  
 2 x wash hand basins  
 9.00m bench  
 Overhead lights  
 6 x mirrors , 12 x Chairs

### Room 7

Floor Area 3.95m x 9.11m  
 Wardrobe Make up 3.60m Hanging Rail  
 2 x Wash Basins  
 7.20m Bench  
 7 x Mirrors  
 12 Chairs

### Room 8

Floor Area 6.79m x 4.78m  
 Wardrobe Make up 2.40m Hanging Rail  
 2 x Wash Basins  
 9.00m Bench  
 5 x Mirrors  
 12 Chairs

### Room 9

Floor Area 4.82m x 6.56m  
 Wardrobe 2.4m Hanging Rail  
 12 Chairs

All rooms contain central heating and floor coverings of carpet and vinyl and opening windows for ventilation and natural light. The number of chairs listed are suggested only and can be increased based on clients requirements.

For more information contact  
**Events & Venues Rotorua**  
 P: 07 349 5141  
 E: [eventsandvenues@rdc.govt.nz](mailto:eventsandvenues@rdc.govt.nz)  
 W: [www.eventsandvenues.co.nz](http://www.eventsandvenues.co.nz)

