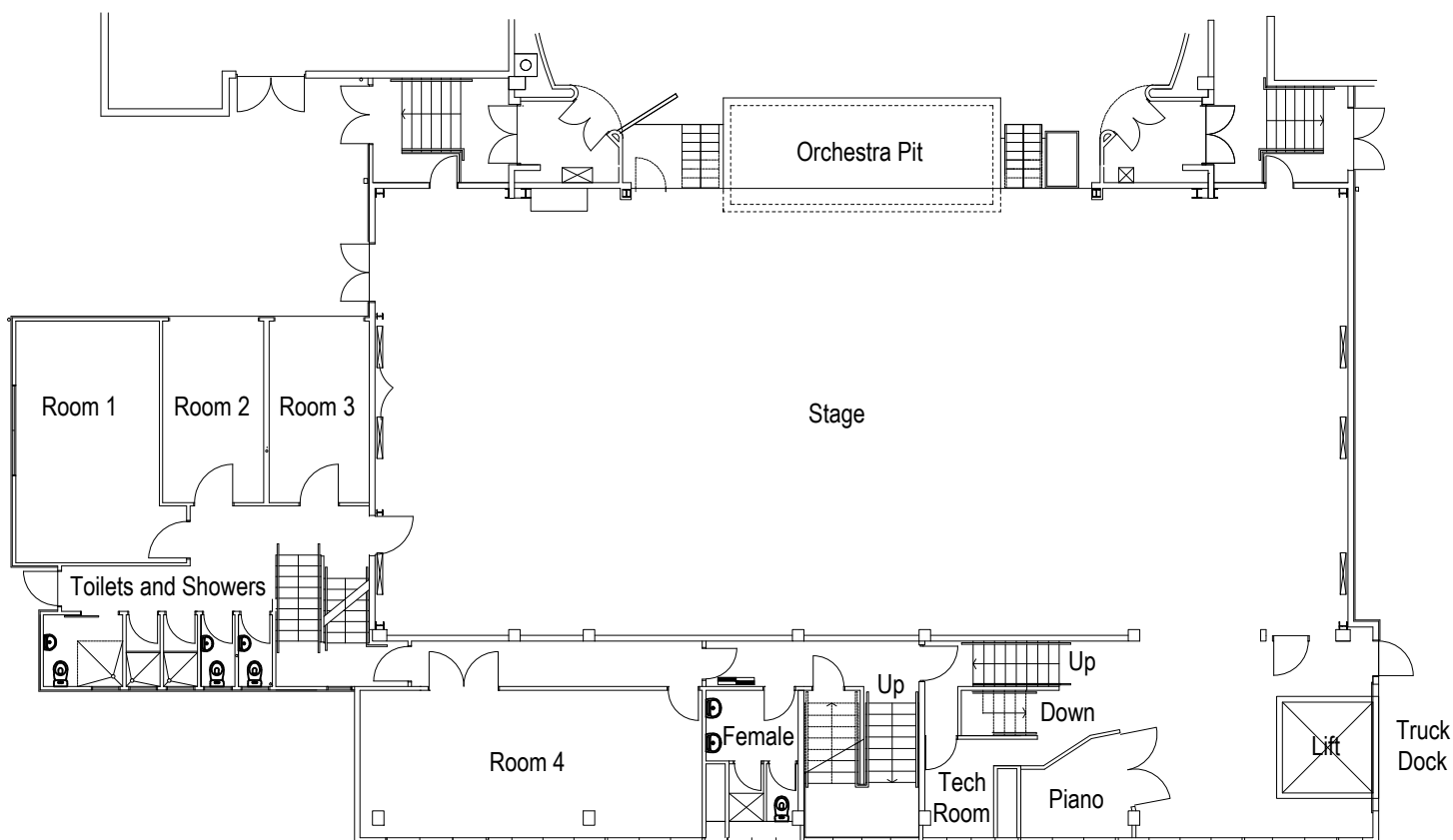


Rotorua Civic Theatre

Stage Rooms Level 1



Room 1

Floor Area 6.40m x 3.80m
 Wardrobe Make up 3 x wash hand basins
 11.70m bench
 7 x mirrors , 12 x Chairs

Room 2

Floor Area 2.65m x 4.84m
 Wardrobe Make up 2.40m Hanging Rail
 2 x Wash Basins
 5.40m Bench
 5 x Mirrors
 8 Chairs

Back Stage

96 Chairs Total

Room 3

Floor Area 2.85m x 4.84m
 Wardrobe Make up 2.40m Hanging Rail
 2 x Wash Basins
 5.40m Bench
 Overhead Lights
 5 x Mirrors
 8 Chairs

Room 4

Floor Area 3.90m x 9.00m
 Wardrobe Make up 3.60m Hanging Rail
 2 x Wash Basins
 7.20m Bench
 Overhead Lights
 4 x Mirrors
 12 Chairs

All rooms contain central heating and floor coverings of carpet and vinyl and opening windows for ventilation and natural light. The number of chairs listed are suggested only and can be increased based on clients requirements.

For more information contact
Events & Venues Rotorua
 P: 07 349 5141
 E: eventsandvenues@rdc.govt.nz
 W: www.eventsandvenues.co.nz

